

# *Pocumtuck Valley Memorial Association*

## *Old Deerfield Sunday Afternoon Concert Series*

Sundays at 3:00 p.m., July 13<sup>th</sup> – August 31<sup>st</sup>, 2025  
\$15 Adults, \$8 Seniors & Students; Tickets available at the door  
Memorial Hall Museum's Music Room at 8 Memorial St., Deerfield, MA



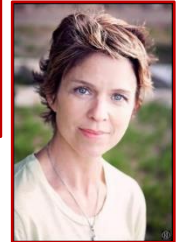
**July 13-**  
Michael Nix, *Banjar*  
Chris Devine, *Violin*



**July 20- Three of Cups**  
Ann-Marie Messbauer,  
*Vocals, Violin, Guitar, Recorder*  
Deborah Claar, *Vocals,*  
*Tambourine*  
photo credit: Michael Tredeau



**July 27-Bella Voce**  
Lisa Woods, *Mezzo-Soprano*  
Teri LaFleur, *Soprano*  
Jerry Noble, *Piano*



**August 3-**  
Ken Forfia & Amy Gates, *Piano*



**August 10- The Fiske -Liu**  
**Piano Duo**  
Jane Fiske & Cynthia Liu

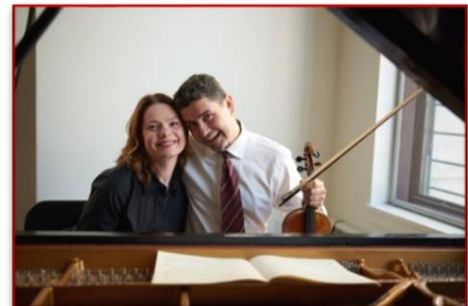


**August 17-**  
Carol Hutter, *Viola*  
Larry Picard, *Piano*  
Eileen Ruby, *Vocalist*



**August 24-**  
David Kopp, *Piano*

**August 31-**  
Georgy Valtchev, *Violin*  
Lora Tchekorotova, *Piano*



Please check our website at [deerfield-ma.org](http://deerfield-ma.org)  
for any changes.

Phone: 413-774-7476, ext. 100

E-mail: [pvmaoffice@deerfieldmuseum.org](mailto:pvmaoffice@deerfieldmuseum.org)



The entire 2025 season is underwritten by:  
*Martha & Thomas Terry and Tim Neumann & Tom Mershon.*  
Generous sponsors for individual concerts  
appear on each concert program.